

Brackenfield Local Character Buildings, Structures and Archaeology Supporting Evidence

BRACKENFIELD NEIGHBOURHOOD PLAN

Context

The National Planning Policy Framework (Framework) in paragraph 126 states that ‘Local planning authorities should set out in their Local Plan a positive strategy for the conservation and enjoyment of the historic environment.’ Heritage assets are not only those designated under statutory regimes, but those that may be recognised by the planning authority as having heritage significance.

The definition of heritage asset in the Framework is ‘**a building, monument, site, place, area or landscape identified as having a degree of significance meriting consideration in planning decisions, because of its heritage interest.**’ Heritage asset includes designated heritage assets and assets identified by the local planning authority (including local listing).’

Paragraph 135 of the Framework states that **non-designated heritage assets can merit consideration in planning matters**, with the authority taking a balanced judgement having regard to the scale of any harm or loss and the significance of the heritage asset.

The following report identifies non-designated heritage assets in the Plan Area with the potential for ‘local listing’ in accordance with the Framework and the Government’s Planning Practice Guidance (paragraph 39). North East Derbyshire District Council has to date not published a criterion for local listing and as such, **the non-designated heritage assets identified in this report have been assessed against criteria, based broadly on that contained in Historic England Advice Note 7. As set out below.**

Criterion 1.

The item meets the government’s definition of a heritage asset.

Demonstrate that the asset falls within the government’s definition of a heritage asset; i.e. a building, monument, site, place, area or landscape.

Criterion 2

The item possesses heritage interest that can be conserved and enjoyed.

Identify the properties of the asset that need to be cared for as heritage – this is its heritage interest. This might include physical things like its appearance and materials, as well as associations with past people or events. Consider whether the physical features of the candidate asset help to illustrate its associations. The four types of heritage interest listed are recognised in national planning policy.

Criterion 3.

The item has a value as heritage for the character and identity of the neighbourhood because of the heritage interest beyond personal or family connections, or the interest of individual property owners.

How the heritage interest you identified in Question 2 is of local value - this is its heritage value. The types of heritage value suggested on the nomination form are based on national guidance by English Heritage.

Criterion 4.

The item has a level of significance that is greater than the general positive identified character of the local area.

What raises the assets heritage value to a level that merits its consideration in planning. Many features of the historic environment are a valued part of local character that should be managed through policies relating to townscape character in the local plan. Registered heritage assets should stand out as of greater significance than these features for their heritage value. The suggested options listed on the nominations form are based on national best practice.

Page

HA 1	Brackenfield Green
HA 2	Amber Valley Camp School (now Ogston Sailing Club)
HA 3	Methodist Chapel 1890 (Brackenfield Green)
HA 4	Sunken Lane leading towards Trinity Chapel
HA 5	Millers Lane
HA 6	The Griffs
HA 7	Cold Harbour Lane
HA 8	Dark Lane
HA 9	Medieval Pottery Kiln
HA 10	Primitive Methodist Chapel
HA 11	19 th Century Parish Marker, Cold Harbour Lane
HA 12	Bumpmill Lane and Stephenson's Amber River Bridge



HA 1 – The Green

Brackenfield
Grid Ref SK368589

1. WHAT IS IT? Is it one of the following?	Tick
a building or group of buildings	
a monument or site (an area of archaeological remains or a structure other than a building)	
a place (e.g. a street, park, garden or natural space)	Y
a landscape (an area defined by visual features or character, e.g. a city centre, village, suburb or field system)	

2. WHY IS IT INTERESTING? Is it interesting in any of the following ways?	Tick / Rank
Historic interest – a well-documented association with a person, event, episode of history, or local industry	1
Archaeological interest – firm evidence of potential to reveal more about the human past through further study	
Architectural interest – an example of an architectural style, a building of particular use, a technique of building, or use of materials	
Artistic interest – It includes artistic endeavour to communicate meaning or use of design (including landscape design) to enhance appearance	
<p>What is it about the asset that provides this interest?</p> <p>Occupation Lane runs along the East of the Green from the Junction with Miller's Lane to School Lane (formerly Rag Lane). Prior to the Enclosure Acts, Occupation Lanes refer to access routes to arable strips in open fields, used by villagers who had occupation rights. This person was guaranteed access to his land along the lane itself. Occupation Lane is sometimes referred to as Hockey or Ocky Lane (both locally and nationally). This also denotes the use of a packhorse way. Until WW2 cattle were grazed on the common land on the Green by tenant farmers, from where they walked their cattle to Chatsworth Park for summer grazing.</p> <p><i>Sources: Paul Watkins "The Street Names of England" (1992) Stamford Press</i></p>	

3. WHY IS IT LOCALLY VALUED? Is the interest of the asset valued locally for any of the following reasons?	Tick / Rank
Association: It connects us to people and events that shaped the identity or character of the area	5
Illustration: It illustrates an aspect of the area's past that makes an important contribution to its identity or character	1
Evidence: It is an important resource for understanding and learning about the area's history	4
Aesthetics: It makes an important contribution to the positive look of the area either by design or fortuitously	2
Communal: It is important to the identity, cohesion, spiritual life or memory of all or part of the community	3
<p>How is the asset locally valued as heritage?</p> <p>The Green, one of the largest in Derbyshire, was a precious resource for grazing and cultivation from its origins right up to WW2. A map of the Ogston Estate dated 1849 shows its use as common land. To this day, community events such as well dressing festivals and celebrations are held on the Green, which continues to be the soul of the community and a space for quiet contemplation. It is appreciated by children and families and visitors and enjoyed by walkers, cyclists, dog walkers and nature lovers.</p>	

4. WHAT MAKES ITS LOCAL SIGNIFICANCE SPECIAL? Do any of the following features make the heritage significance of the asset stand out above the surrounding environment?	Tick
Age ... Is it particularly old, or of a date that is significant to the local area?	3
Rarity ... Is it unusual in the area or a rare survival of something that was once common?	
Integrity ... Is it largely complete or in a near to original condition?	1
Group value ... Is it part of a group that have a close historic, aesthetic or communal association?	
Brackenfield's identity ... Is it important to the identity or character of the NPA or a particular part of it?	2
Other ... Is there another way you think it has special local value?	
How does this contribute to its value? Brackenfield Green has a documented history going back to Anglo-Saxon times when the village was known as Brackenthwaite (meaning Bracken clearing.) The area is largely unchanged and recognisable on maps from at least 1746. Brackenfield Green is well known in its own right and has a distinctive character.	



HA 2 –Amber Valley Camp School (now Ogston Sailing Club)

Woolley
Grid Ref SK37216051

1. WHAT IS IT? Is it one of the following?	Tick
a building or group of buildings	Y
a monument or site (an area of archaeological remains or a structure other than a building)	
a place (e.g. a street, park, garden or natural space)	
a landscape (an area defined by visual features or character, e.g. a city centre, village, suburb or field system)	

2. WHY IS IT INTERESTING? Is it interesting in any of the following ways?	Tick / Rank
Historic interest – a well-documented association with a person, event, episode of history, or local industry	1
Archaeological interest – firm evidence of potential to reveal more about the human past through further study	
Architectural interest – an example of an architectural style, a building of particular use, a technique of building, or use of materials	2
Artistic interest – It includes artistic endeavour to communicate meaning or use of design (including landscape design) to enhance appearance	
What is it about the asset that provides this interest? The site of Amber Valley Camp School was built by the National Camps Corporation in 1939 and was used as a boarding school for boys evacuated from Derby during the Second World War. The structures were constructed of Canadian Red Cedar wood. These comprised of a dining hall, an assembly hall, kitchens, a sanatorium, classrooms, ablution blocks, dormitories and air raid shelters. The boarding school closed in July 1945 and after the war the camp was run by Derby Education Committee as a school for city children to experience the countryside. The camp was demolished by 1958, when Ogston Reservoir was constructed. The dining hall is the only building to remain and it is used as a clubhouse by Ogston Sailing Club. The camp was designed by Thomas Tait (FRIBA), a Scottish Modernist Architect who designed	

many prestigious buildings including St Andrew's House in Edinburgh, the Kodak building in London and the pylons for Sydney Harbour Bridge.

Sources: World Wide Web page Derby Evening Telegraph. Derby School evacuees relive war years at Amber Valley Camp

<<http://bygonederbyshire.co.uk/articles/Derby_School_evacuees_relive_war_years_at_Amber_Valley_Camp>> Updated on 04-FEB-2009 [Accessed on 10-MAR-2009]World Wide Web page. The Media Archive for Central England. A visit to Amber Valley Camp School

<<<http://www.macearchive.org/Media.html?Title=125#>>> [Accessed on 10-MAR-2009]Twentieth century fortifications in England. Volume VIII. Civil defence in WWII.C.S. Dobinson

3. WHY IS IT LOCALLY VALUED? Is the interest of the asset valued locally for any of the following reasons?	Tick / Rank
Association: It connects us to people and events that shaped the identity or character of the area	1
Illustration: It illustrates an aspect of the area's past that makes an important contribution to its identity or character	2
Evidence: It is an important resource for understanding and learning about the area's history	
Aesthetics: It makes an important contribution to the positive look of the area either by design or fortuitously	
Communal: It is important to the identity, cohesion, spiritual life or memory of all or part of the community	
How is the asset locally valued as heritage? The Amber Valley Camp School played a significant part in the wartime history of Brackenfield. The re-purposing of the dining room to form the club house for the sailing club after the construction of the reservoir marks a key period in the history of the village, when many buildings were lost to the construction of the reservoir. <i>Sources: URL: http://alrs.org.uk/2015/10/5524/</i>	

4. WHAT MAKES ITS LOCAL SIGNIFICANCE SPECIAL? Do any of the following features make the heritage significance of the asset stand out above the surrounding environment?	Tick
Age ... Is it particularly old, or of a date that is significant to the local area?	1
Rarity ... Is it unusual in the area or a rare survival of something that was once common?	
Integrity ... Is it largely complete or in a near to original condition?	
Group value ... Is it part of a group that have a close historic, aesthetic or communal association?	
Brackenfield's identity ... Is it important to the identity or character of the NPA or a particular part of it?	
Other ... Is there another way you think it has special local value?	
How does this contribute to its value? The remaining building is of historic significance to the area and nationally. The pupils of Derby School, were evacuated to Amber Valley Camp, for the whole of WWII. The valley where the railway line and camp were situated is now covered by Ogston Reservoir, built in the late 1950s by the Water Board. The only building left that is still in place was the School Dining Room, Masters' Common Room and Sweet Shop (now the Clubhouse of Ogston Sailing Club), all the dormitories, classrooms and stores having been demolished. The best preserved remaining example of a camp school is Sayers Croft School in Ewehurst, Surrey where the dining hall is grade 2 listed due to the importance of Tait's work. <i>Sources: URL: alrs.org.uk/2015/10/5524/</i> <i>URL: http://www.picturethepast.org.uk/frontend.phpkeywords=Ref_No_increment;EQUALS;DCHQ006289&pos=2&action=zoom</i>	



**HA 3 – Methodist Chapel
1890**

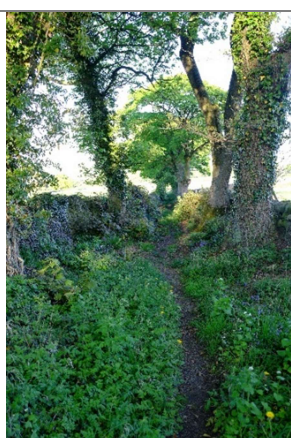
**Brackenfield Green
Grid Ref SK366588
HER No. 1922**

1. WHAT IS IT? Is it one of the following?	Tick
a building or group of buildings	Y
a monument or site (an area of archaeological remains or a structure other than a building)	
a place (e.g. a street, park, garden or natural space)	
a landscape (an area defined by visual features or character, e.g. a city centre, village, suburb or field system)	

2. WHY IS IT INTERESTING? Is it interesting in any of the following ways?	Tick / Rank
Historic interest – a well-documented association with a person, event, episode of history, or local industry	1
Archaeological interest – firm evidence of potential to reveal more about the human past through further study	
Architectural interest – an example of an architectural style, a building of particular use, a technique of building, or use of materials	2
Artistic interest – It includes artistic endeavour to communicate meaning or use of design (including landscape design) to enhance appearance	
What is it about the asset that provides this interest? Built in 1890, the Methodist Chapel in Brackenfield is of local historic interest. The chapel is a brick structure that originally had seating for 150 people.	

3. WHY IS IT LOCALLY VALUED? Is the interest of the asset valued locally for any of the following reasons?	Tick / Rank
Association: It connects us to people and events that shaped the identity or character of the area	
Illustration: It illustrates an aspect of the area's past that makes an important contribution to its identity or character	1
Evidence: It is an important resource for understanding and learning about the area's history	
Aesthetics: It makes an important contribution to the positive look of the area either by design or fortuitously	2
Communal: It is important to the identity, cohesion, spiritual life or memory of all or part of the community	3
How is the asset locally valued as heritage? Located on the edge of Brackenfield Green, the Methodist chapel makes an important contribution to the character of the area. The building is an important resource for understanding and learning about the area's history, especially the spread of Methodism.	

4. WHAT MAKES ITS LOCAL SIGNIFICANCE SPECIAL? Do any of the following features make the heritage significance of the asset stand out above the surrounding environment?	Tick
Age ... Is it particularly old, or of a date that is significant to the local area?	
Rarity ... Is it unusual in the area or a rare survival of something that was once common?	2
Integrity ... Is it largely complete or in a near to original condition?	
Group value ... Is it part of a group that have a close historic, aesthetic or communal association?	
Brackenfield's identity ... Is it important to the identity or character of the NPA or a particular part of it?	1
Other ... Is there another way you think it has special local value?	
How does this contribute to its value? The church has acted for over a hundred years as a focus and hub of community activity. The building has recently undergone sympathetic work to convert to a dwelling but retains its essential integrity.	



HA 4 – Sunken Lane

Leading towards Trinity Chapel
Grid Ref SK

1. WHAT IS IT? Is it one of the following?	Tick
a building or group of buildings	
a monument or site (an area of archaeological remains or a structure other than a building)	
a place (e.g. a street, park, garden or natural space)	Y
a landscape (an area defined by visual features or character, e.g. a city centre, village, suburb or field system)	
2. WHY IS IT INTERESTING? Is it interesting in any of the following ways?	Tick / Rank
Historic interest – a well-documented association with a person, event, episode of history, or local industry	2
Archaeological interest – firm evidence of potential to reveal more about the human past through further study	1
Architectural interest – an example of an architectural style, a building of particular use, a technique of building, or use of materials	
Artistic interest – It includes artistic endeavour to communicate meaning or use of design (including landscape design) to enhance appearance	
What is it about the asset that provides this interest? This is a survivor of a possible Roman/mediaeval road and track network linking Rykneld Street (Principal Roman road to the East) with High Oredish and Cold Harbour Lane. Cold Harbour is an Anglo-Saxon term for a large, abandoned Roman shelter.	

3. WHY IS IT LOCALLY VALUED? Is the interest of the asset valued locally for any of the following reasons?	Tick / Rank
Association: It connects us to people and events that shaped the identity or character of the area	2
Illustration: It illustrates an aspect of the area's past that makes an important contribution to its identity or character	1
Evidence: It is an important resource for understanding and learning about the area's history	
Aesthetics: It makes an important contribution to the positive look of the area either by design or fortuitously	3
Communal: It is important to the identity, cohesion, spiritual life or memory of all or part of the community	
How is the asset locally valued as heritage? The sunken path is regularly used by walkers taking a route from the centre of Brackenfield to Trinity Chapel and High Oredish.	

4. WHAT MAKES ITS LOCAL SIGNIFICANCE SPECIAL? Do any of the following features make the heritage significance of the asset stand out above the surrounding environment?	Tick
Age ... Is it particularly old, or of a date that is significant to the local area?	1
Rarity ... Is it unusual in the area or a rare survival of something that was once common?	3
Integrity ... Is it largely complete or in a near to original condition?	
Group value ... Is it part of a group that have a close historic, aesthetic or communal association?	
Brackenfield's identity ... Is it important to the identity or character of the NPA or a particular part of it?	2
Other ... Is there another way you think it has special local value?	
How does this contribute to its value? This is an ancient path which forms part of a network of paths connecting Trinity Chapel to the mediaeval settlements of Little Ogston, Woolley, Ogston and Brackenfield and passes through the settlement known as The Griffs. The Ordnance Survey Map of 1842 shows its intersection with a track leading to Rag Lane (now School Lane) and at this time, the Sunken Lane extended all the way from White Carr Lane to Carr Lane. This also linked Walnut Farm and Top Farm at Woolley (shown on the Ogston Estate survey map of 1724 as Upper and Nether Kirkgate) to Trinity Chapel. See Appendix A.	



HA 5 – Millers Lane

Brackenfield
Grid Ref SK

1. WHAT IS IT? Is it one of the following?	Tick
a building or group of buildings	
a monument or site (an area of archaeological remains or a structure other than a building)	
a place (e.g. a street, park, garden or natural space)	Y
a landscape (an area defined by visual features or character, e.g. a city centre, village, suburb or field system)	

2. WHY IS IT INTERESTING? Is it interesting in any of the following ways?	Tick / Rank
Historic interest – a well-documented association with a person, event, episode of history, or local industry	2
Archaeological interest – firm evidence of potential to reveal more about the human past through further study	1
Architectural interest – an example of an architectural style, a building of particular use, a technique of building, or use of materials	
Artistic interest – It includes artistic endeavour to communicate meaning or use of design (including landscape design) to enhance appearance	
What is it about the asset that provides this interest? Millers Lane, a sunken lane leading West from Butterfield Lane was used as a drovers' road and links with known Roman roads in the area. As recently as the 20 th Century, farmers with small land holdings would drive their cattle to the Chatsworth Estate for seasonal grazing. Brackenfield Green (common land) was also a traditional area for cattle grazing, evidenced by unrestricted access to the site where Millers Lane joins Occupation Lane.	

3. WHY IS IT LOCALLY VALUED? Is the interest of the asset valued locally for any of the following reasons?	Tick / Rank
Association: It connects us to people and events that shaped the identity or character of the area	
Illustration: It illustrates an aspect of the area's past that makes an important contribution to its identity or character	1
Evidence: It is an important resource for understanding and learning about the area's history	2
Aesthetics: It makes an important contribution to the positive look of the area either by design or fortuitously	3
Communal: It is important to the identity, cohesion, spiritual life or memory of all or part of the community	
How is the asset locally valued as heritage? Millers Lane is locally valued as it illustrates an aspect of the area's past, when farmers would drive their cattle to the Chatsworth Estate. A well is located on the lane which appears on a map dated 1884 and is one of only a small number of publicly accessible wells. Aesthetically, the lane makes an important contribution to the character of the area, being narrow and sunken and includes an impressive section of dry stone wall, unlike any other in the Plan area.	

4. WHAT MAKES ITS LOCAL SIGNIFICANCE SPECIAL? Do any of the following features make the heritage significance of the asset stand out above the surrounding environment?	Tick
Age ... Is it particularly old, or of a date that is significant to the local area?	3
Rarity ... Is it unusual in the area or a rare survival of something that was once common?	
Integrity ... Is it largely complete or in a near to original condition?	
Group value ... Is it part of a group that have a close historic, aesthetic or communal association?	2
Brackenfield's identity ... Is it important to the identity or character of the NPA or a particular part of it?	1
Other ... Is there another way you think it has special local value?	
How does this contribute to its value? Millers Lane is of local heritage significance because it is important to the identity and rural character of Brackenfield aesthetically and historically. The lane is part of group of lanes, footpaths and bridleways that were used as drover routes and has links with known Roman roads in the area. The lane would warrant further survey.	



HA 6 – The Griffs

Between Trinity Chapel
and White Carr Farm
Grid Ref SK 363595

1. WHAT IS IT? Is it one of the following?	Tick
a building or group of buildings	
a monument or site (an area of archaeological remains or a structure other than a building)	1
a place (e.g. a street, park, garden or natural space)	
a landscape (an area defined by visual features or character, e.g. a city centre, village, suburb or field system)	

2. WHY IS IT INTERESTING? Is it interesting in any of the following ways?	Tick / Rank
Historic interest – a well-documented association with a person, event, episode of history, or local industry	2
Archaeological interest – firm evidence of potential to reveal more about the human past through further study	1
Architectural interest – an example of an architectural style, a building of particular use, a technique of building, or use of materials	
Artistic interest – It includes artistic endeavour to communicate meaning or use of design (including landscape design) to enhance appearance	
What is it about the asset that provides this interest? This is the site of a mediaeval settlement, the remains of which are still visible. In 1724 it was a 28 acre farm occupied by John Knowles. The Griffs are also mentioned in an order by the taxation commissioners dated 22 July 1654. These papers are in the Ogston Estate archives.	

3. WHY IS IT LOCALLY VALUED? Is the interest of the asset valued locally for any of the following reasons?	Tick / Rank
Association: It connects us to people and events that shaped the identity or character of the area	2
Illustration: It illustrates an aspect of the area's past that makes an important contribution to its identity or character	1
Evidence: It is an important resource for understanding and learning about the area's history	
Aesthetics: It makes an important contribution to the positive look of the area either by design or fortuitously	
Communal: It is important to the identity, cohesion, spiritual life or memory of all or part of the community	
How is the asset locally valued as heritage? It is an interesting surviving site from mediaeval Brackenfield.	

4. WHAT MAKES ITS LOCAL SIGNIFICANCE SPECIAL? Do any of the following features make the heritage significance of the asset stand out above the surrounding environment?	Tick
Age ... Is it particularly old, or of a date that is significant to the local area?	1
Rarity ... Is it unusual in the area or a rare survival of something that was once common?	2
Integrity ... Is it largely complete or in a near to original condition?	
Group value ... Is it part of a group that have a close historic, aesthetic or communal association?	
Brackenfield's identity ... Is it important to the identity or character of the NPA or a particular part of it?	
Other ... Is there another way you think it has special local value?	
<p>How does this contribute to its value?</p> <p>It is close to the sunken lane of possible Roman origin which now connects Carr Lane to White Carr Lane. The sunken lane originally connected to School Lane (formerly Rag Lane) making a route from the village to Trinity Chapel. This route can be seen on old maps e.g. Ordnance Survey map dated 1842 and from the air, though the track is no longer clearly visible on the ground. See Appendix A.</p>	

HA 7 - Cold Harbour Lane

Off White Carr Lane
Grid Ref SK 354596

1. WHAT IS IT? Is it one of the following?	Tick
a building or group of buildings	
a monument or site (an area of archaeological remains or a structure other than a building)	
a place (e.g. a street, park, garden or natural space)	Y
a landscape (an area defined by visual features or character, e.g. a city centre, village, suburb or field system)	

2. WHY IS IT INTERESTING? Is it interesting in any of the following ways?	Tick / Rank
Historic interest – a well-documented association with a person, event, episode of history, or local industry	2
Archaeological interest – firm evidence of potential to reveal more about the human past through further study	1
Architectural interest – an example of an architectural style, a building of particular use, a technique of building, or use of materials	
Artistic interest – It includes artistic endeavour to communicate meaning or use of design (including landscape design) to enhance appearance	
<p>What is it about the asset that provides this interest?</p> <p>The name “Cold Harbour” denotes an abandoned shelter of some size. They are all found close to major Neolithic or Roman roads. In this instance, it is close to Rykneld Street (Roman Road). This one is possibly unique in the British Isles, as a religious site (Trinity Chapel) and spring are nearby. Pagan sites were often located near a water source and Christian churches were often built on former pagan sites.</p> <p><i>Sources: Dr J C Hahn (Etymologist) Cambridge: Writings on Cold Harbours, Paul Hinde: Roads and Tracks for Historians (2001) pub Phillimore</i></p>	

3. WHY IS IT LOCALLY VALUED? Is the interest of the asset valued locally for any of the following reasons?	Tick / Rank
Association: It connects us to people and events that shaped the identity or character of the area	3
Illustration: It illustrates an aspect of the area's past that makes an important contribution to its identity or character	1
Evidence: It is an important resource for understanding and learning about the area's history	2
Aesthetics: It makes an important contribution to the positive look of the area either by design or fortuitously	
Communal: It is important to the identity, cohesion, spiritual life or memory of all or part of the community	4
<p>How is the asset locally valued as heritage?</p> <p>Individuals and groups still make pilgrimages to Trinity Chapel and until the 1990s there were annual processions from Trinity Church in Brackenfield to Trinity Chapel via Cold Harbour Lane. In living memory, cattle were driven from common land on Brackenfield Green (Occupation Lane) via Cold Harbour Lane and over the moors to summer pastures at Chatsworth Park. The cattle were walked until c 1937 after which they were transported by lorry.</p>	

4. WHAT MAKES ITS LOCAL SIGNIFICANCE SPECIAL? Do any of the following features make the heritage significance of the asset stand out above the surrounding environment?	Tick
Age ... Is it particularly old, or of a date that is significant to the local area?	2
Rarity ... Is it unusual in the area or a rare survival of something that was once common?	1
Integrity ... Is it largely complete or in a near to original condition?	
Group value ... Is it part of a group that have a close historic, aesthetic or communal association?	
Brackenfield's identity ... Is it important to the identity or character of the NPA or a particular part of it?	3
Other ... Is there another way you think it has special local value?	
<p>How does this contribute to its value?</p> <p>This is an important vantage point and would have been a significant point on Roman routes. From this point on Cold Harbour Lane it is possible to see views on a clear day into Leicestershire to the South, Nottinghamshire and the Lincoln Cliffs to the East and Northwards into South Yorkshire. Rykneld Street (Roman Road), the site of the Roman Marching Camp at Higham and the track down to the ford/packhorse bridge on the river Amber are clearly visible.</p> <p>In Europe "Cold Harbours" are often associated with religious sites. For example, Dr Hahn has noted that Kalterheberg Forest at Eifel has an example of a large, abandoned Roman refuge with religious association. Cold Harbour Lane in Brackenfield would be unique in the UK, in being associated with a religious site. It is a site which very much merits further investigation.</p>	

1. WHAT IS IT? Is it one of the following?	Tick
a building or group of buildings	
a monument or site (an area of archaeological remains or a structure other than a building)	
a place (e.g. a street, park, garden or natural space)	1
a landscape (an area defined by visual features or character, e.g. a city centre, village, suburb or field system)	

2. WHY IS IT INTERESTING? Is it interesting in any of the following ways?	Tick / Rank
Historic interest – a well-documented association with a person, event, episode of history, or local industry	2
Archaeological interest – firm evidence of potential to reveal more about the human past through further study	1
Architectural interest – an example of an architectural style, a building of particular use, a technique of building, or use of materials	
Artistic interest – It includes artistic endeavour to communicate meaning or use of design (including landscape design) to enhance appearance	
What is it about the asset that provides this interest? It is a former Roman Road	

3. WHY IS IT LOCALLY VALUED? Is the interest of the asset valued locally for any of the following reasons?	Tick / Rank
Association: It connects us to people and events that shaped the identity or character of the area	
Illustration: It illustrates an aspect of the area's past that makes an important contribution to its identity or character	2
Evidence: It is an important resource for understanding and learning about the area's history	1
Aesthetics: It makes an important contribution to the positive look of the area either by design or fortuitously	
Communal: It is important to the identity, cohesion, spiritual life or memory of all or part of the community	
How is the asset locally valued as heritage? It is of historical interest as part of a network of Roman Roads in the area.	

4. WHAT MAKES ITS LOCAL SIGNIFICANCE SPECIAL? Do any of the following features make the heritage significance of the asset stand out above the surrounding environment?	Tick
Age ... Is it particularly old, or of a date that is significant to the local area?	1
Rarity ... Is it unusual in the area or a rare survival of something that was once common?	
Integrity ... Is it largely complete or in a near to original condition?	
Group value ... Is it part of a group that have a close historic, aesthetic or communal association?	
Brackenfield's identity ... Is it important to the identity or character of the NPA or a particular part of it?	
Other ... Is there another way you think it has special local value?	

How does this contribute to its value?

It is of historical interest as part of a network of Roman Roads in the area.



HA 9 Medieval Pottery Kiln

Grid Ref SK 371 601

HER No. 1901

1. WHAT IS IT? Is it one of the following?	Tick
a building or group of buildings	
a monument or site (an area of archaeological remains or a structure other than a building)	Monument no: 314181
a place (e.g. a street, park, garden or natural space)	
a landscape (an area defined by visual features or character, e.g. a city centre, village, suburb or field system)	

2. WHY IS IT INTERESTING? Is it interesting in any of the following ways?	Tick / Rank
Historic interest – a well-documented association with a person, event, episode of history, or local industry	2
Archaeological interest – firm evidence of potential to reveal more about the human past through further study	1
Architectural interest – an example of an architectural style, a building of particular use, a technique of building, or use of materials	
Artistic interest – It includes artistic endeavour to communicate meaning or use of design (including landscape design) to enhance appearance	
<p>What is it about the asset that provides this interest?</p> <p>In 1972 Patrick Strange and Ashover WEA Group excavated two pottery kilns, dated c.1400, at Brackenfield. The kilns measured 3 metres by 1.75 metres were oval in plan and had two opposed flues. Both were constructed of local sandstone, the walls of kiln 2 survived to a height of 0.9 metres. There is evidence for multiple firings in at least one of the kilns. Pottery included glazed jugs and bowls and unglazed cooking pots in buff to white fabrics. Glazed crested ridge and roof tiles were also produced. Production has been dated to circa 1400. Material from the kiln excavations seems to be with Chesterfield Museum Service as of 8/8/91. It was marked LO72 (for Little Ogston 1972. (3)</p> <p>Sources: Medieval archaeology : journal of the Society for Medieval Archaeology. The North Derbyshire archaeological survey to AD 1500 by C R Hart Medieval pottery in Britain AD 900-1600 by Michael R McCarthy, Catherine M Brooks</p>	

3. WHY IS IT LOCALLY VALUED? Is the interest of the asset valued locally for any of the following reasons?	Tick / Rank
Association: It connects us to people and events that shaped the identity or character of the area	1
Illustration: It illustrates an aspect of the area's past that makes an important contribution to its identity or character	
Evidence: It is an important resource for understanding and learning about the area's history	
Aesthetics: It makes an important contribution to the positive look of the area either by design or fortuitously	

Communal: It is important to the identity, cohesion, spiritual life or memory of all or part of the community	
<p>How is the asset locally valued as heritage?</p> <p>This site provides evidence of pottery manufacturing during the Medieval period and pottery from this area has been found in several sites in the UK. The clay seam that rises between Wessington and Brackenfield, is the continuation of the seam in Denby, used in the making of Denby Pottery to this day. Pottery continues locally in the Wheel House at Amber Mill, where Royce Wood Pottery hand make ceramic tiles using unique variegated glazes. Amber Mill (built in 1794) is the last remaining cotton mill on the river Amber.</p>	

4. WHAT MAKES ITS LOCAL SIGNIFICANCE SPECIAL? Do any of the following features make the heritage significance of the asset stand out above the surrounding environment?	Tick
Age ... Is it particularly old, or of a date that is significant to the local area?	Y
Rarity ... Is it unusual in the area or a rare survival of something that was once common?	Y
Integrity ... Is it largely complete or in a near to original condition?	
Group value ... Is it part of a group that have a close historic, aesthetic or communal association?	
Brackenfield's identity ... Is it important to the identity or character of the NPA or a particular part of it?	
Other ... Is there another way you think it has special local value?	
<p>How does this contribute to its value?</p> <p>It is unusual to have a seam of pottery clay in Derbyshire. This site evidences manufacturing over many centuries until the present day. Brackenfield Pottery is known nationally and is in a distinct style. Sherds can be found still in surrounding fields.</p> <p>A pottery scatter was noted in this area in 2010. The density of the scatter appeared to correspond to areas of bare, soft and loose soil, and may have been upcast from ditch-cleaning operations. The material comprises of hundreds of body sherds, many of which are pieces of rim and handles. Glazes are shades of yellow through to greens and browns. The scatter corresponds closely to the north boundary of the field and material may therefore extend into or originate from the adjacent field to the north, which was not investigated.</p> <p>Sources: Lewis, B (Derbyshire Archaeological Society), 2010, Email to the HER, 22/06/2010 (Unpublished document). SDR21477.</p>	



HA10 – Primitive Methodist Chapel

Woolley
Grid Ref SK
3695060574
HER No. 1921

1. WHAT IS IT? Is it one of the following?	Tick
a building or group of buildings	Monument no. 1498327
a monument or site (an area of archaeological remains or a structure other than a building)	
a place (e.g. a street, park, garden or natural space)	
a landscape (an area defined by visual features or character, e.g. a city centre, village, suburb or field system)	

2. WHY IS IT INTERESTING? Is it interesting in any of the following ways?	Tick / Rank
Historic interest – a well-documented association with a person, event, episode of history, or local industry	1
Archaeological interest – firm evidence of potential to reveal more about the human past through further study	
Architectural interest – an example of an architectural style, a building of particular use, a technique of building, or use of materials	2
Artistic interest – It includes artistic endeavour to communicate meaning or use of design (including landscape design) to enhance appearance	
What is it about the asset that provides this interest? Primitive Methodist chapel at Woolley Moor built in 1841, built of stone and slate. Although converted for residential use, the building retains the original Chapel notice board. Url: https://www.pastscape.org.uk/hob.aspx?hob_id=1498327	

3. WHY IS IT LOCALLY VALUED? Is the interest of the asset valued locally for any of the following reasons?	Tick / Rank
Association: It connects us to people and events that shaped the identity or character of the area	
Illustration: It illustrates an aspect of the area's past that makes an important contribution to its identity or character	1
Evidence: It is an important resource for understanding and learning about the area's history	
Aesthetics: It makes an important contribution to the positive look of the area either by design or fortuitously	2
Communal: It is important to the identity, cohesion, spiritual life or memory of all or part of the community	
How is the asset locally valued as heritage? It is recognised as a former place of worship and part of a strong tradition of non-conformist congregations in the area.	

4. WHAT MAKES ITS LOCAL SIGNIFICANCE SPECIAL? Do any of the following features make the heritage significance of the asset stand out above the surrounding environment?	Tick
Age ... Is it particularly old, or of a date that is significant to the local area?	
Rarity ... Is it unusual in the area or a rare survival of something that was once common?	
Integrity ... Is it largely complete or in a near to original condition?	1
Group value ... Is it part of a group that have a close historic, aesthetic or communal association?	
Brackenfield's identity ... Is it important to the identity or character of the city or a particular part of it?	
Other ... Is there another way you think it has special local value?	
How does this contribute to its value? The former chapel is complete and well-maintained; a charming focal point on Quarry Lane with clear reference to its former status as a place of worship.	

HA 11 – 19th Century Parish MarkerCold Harbour Lane
Grid Ref SK358593

1. WHAT IS IT? Is it one of the following?	Tick
a building or group of buildings	
a monument or site (an area of archaeological remains or a structure other than a building)	Y
a place (e.g. a street, park, garden or natural space)	
a landscape (an area defined by visual features or character, e.g. a city centre, village, suburb or field system)	

2. WHY IS IT INTERESTING? Is it interesting in any of the following ways?	Tick / Rank
Historic interest – a well-documented association with a person, event, episode of history, or local industry	1
Archaeological interest – firm evidence of potential to reveal more about the human past through further study	
Architectural interest – an example of an architectural style, a building of particular use, a technique of building, or use of materials	
Artistic interest – It includes artistic endeavour to communicate meaning or use of design (including landscape design) to enhance appearance	
What is it about the asset that provides this interest? This is a carved stone by the unspecified road, in parish of BRACKENFIELD (NORTH EAST DERBYSHIRE District), Cold Harbour Lane, field behind farm . Boundary Marker, erected by the parish in the 19th century. Inscription reads; A.P / : (d) & LL+ A+ (? / . The boundary marker is of historic interest. It is an important historical and landscape feature. URL: http://archaeologydataservice.ac.uk/archsearch/record?titleId=2639391	

3. WHY IS IT LOCALLY VALUED? Is the interest of the asset valued locally for any of the following reasons?	Tick / Rank
Association: It connects us to people and events that shaped the identity or character of the area	
Illustration: It illustrates an aspect of the area's past that makes an important contribution to its identity or character	2
Evidence: It is an important resource for understanding and learning about the area's history	1
Aesthetics: It makes an important contribution to the positive look of the area either by design or fortuitously	
Communal: It is important to the identity, cohesion, spiritual life or memory of all or part of the community	
How is the asset locally valued as heritage? Parishes were the main administrative units in the 19 th and 20 th centuries, and, although they have no purpose today, the boundary stones dividing them are a visible reminder of our interesting local heritage.	

4. WHAT MAKES ITS LOCAL SIGNIFICANCE SPECIAL? Do any of the following features make the heritage significance of the asset stand out above the surrounding environment?	Tick
Age ... Is it particularly old, or of a date that is significant to the local area?	Y
Rarity ... Is it unusual in the area or a rare survival of something that was once common?	
Integrity ... Is it largely complete or in a near to original condition?	
Group value ... Is it part of a group that have a close historic, aesthetic or communal association?	
Brackenfield's identity ... Is it important to the identity or character of the NPA or a particular part of it?	Y
Other ... Is there another way you think it has special local value?	
How does this contribute to its value? It is important to the history and identity of Brackenfield Parish.	

**HA12 – Bumpmill Lane and Stephenson's
Amber Bridge**

Grid Ref SK 386581
HER No. 1923

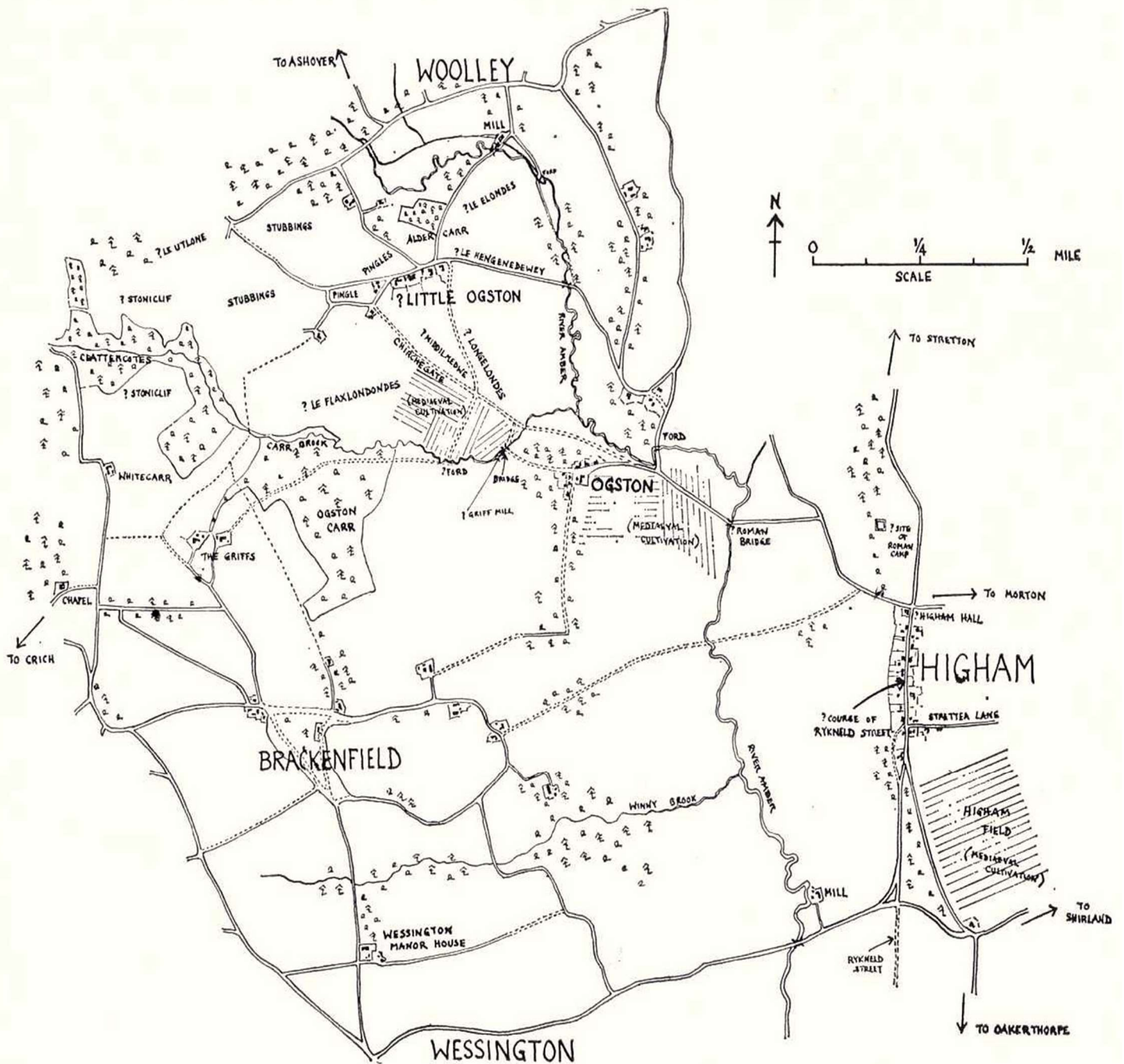
1. WHAT IS IT? Is it one of the following?	Tick
a building or group of buildings	
a monument or site (an area of archaeological remains or a structure other than a building)	Y
a place (e.g. a street, park, garden or natural space)	
a landscape (an area defined by visual features or character, e.g. a city centre, village, suburb or field system)	

2. WHY IS IT INTERESTING? Is it interesting in any of the following ways?	Tick / Rank
Historic interest – a well-documented association with a person, event, episode of history, or local industry	2
Archaeological interest – firm evidence of potential to reveal more about the human past through further study	
Architectural interest – an example of an architectural style, a building of particular use, a technique of building, or use of materials	1
Artistic interest – It includes artistic endeavour to communicate meaning or use of design (including landscape design) to enhance appearance	
What is it about the asset that provides this interest? This bridge is of historical importance to the development of the railway through the Amber Valley. It is a three-span bridge, crossing Bumpmill Lane, Agricultural land and the River Amber. It was built in 1836-40 for the North Midland Railway to the designs of George and Robert Stephenson with Frederick Swanwick. The bridge is one of an extended sequence of similar bridges between Derby and Chesterfield. The contract drawing for the bridge survives; drawing No. 12 in the North Midland Railway South Wingfield Contract. Sources: SDR22095 - Unpublished document: English Heritage. 2014. Advice report: Bump Mill and River Amber Bridge (SPC 8 62). Case Number 1419921.	

3. WHY IS IT LOCALLY VALUED? Is the interest of the asset valued locally for any of the following reasons?	Tick / Rank
Association: It connects us to people and events that shaped the identity or character of the area	2
Illustration: It illustrates an aspect of the area's past that makes an important contribution to its identity or character	1
Evidence: It is an important resource for understanding and learning about the area's history	
Aesthetics: It makes an important contribution to the positive look of the area either by design or fortuitously	
Communal: It is important to the identity, cohesion, spiritual life or memory of all or part of the community	
How is the asset locally valued as heritage? It continues to serve its original purpose in its use as a mainline railway bridge and has been in continuous use for around 180 years.	

4. WHAT MAKES ITS LOCAL SIGNIFICANCE SPECIAL? Do any of the following features make the heritage significance of the asset stand out above the surrounding environment?	Tick
Age ... Is it particularly old, or of a date that is significant to the local area?	1
Rarity ... Is it unusual in the area or a rare survival of something that was once common?	
Integrity ... Is it largely complete or in a near to original condition?	
Group value ... Is it part of a group that have a close historic, aesthetic or communal association?	2
Brackenfield's identity ... Is it important to the identity or character of the NPA or a particular part of it?	
Other ... Is there another way you think it has special local value?	
How does this contribute to its value? The bridge is of special significance due to its age and association with George Stephenson ('The father of the railways').	

Appendix A



2. Ogston in mediaeval days

Drawing from "A History of Ogston" by Gladwyn Turbutt (1975)

Appendix B Local character buildings, structures and archaeology



Date Created: 31-7-2018 | **Map Centre (Easting/Northing):** 437164 / 359524 | **Scale:** 1:19462 | © Crown copyright and database right. All rights reserved (00009999) 2018 © Contains Ordnance Survey Data : Crown copyright and database right 2018